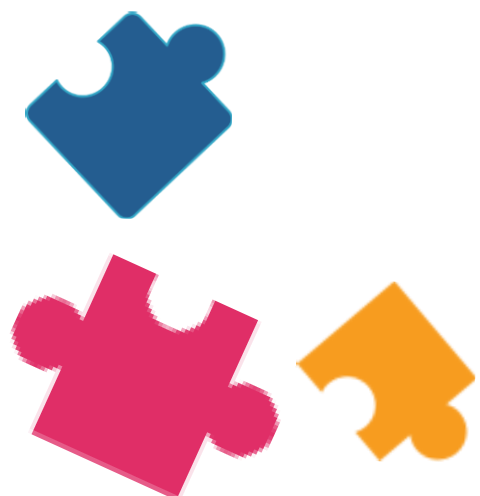


Connecting the Pieces

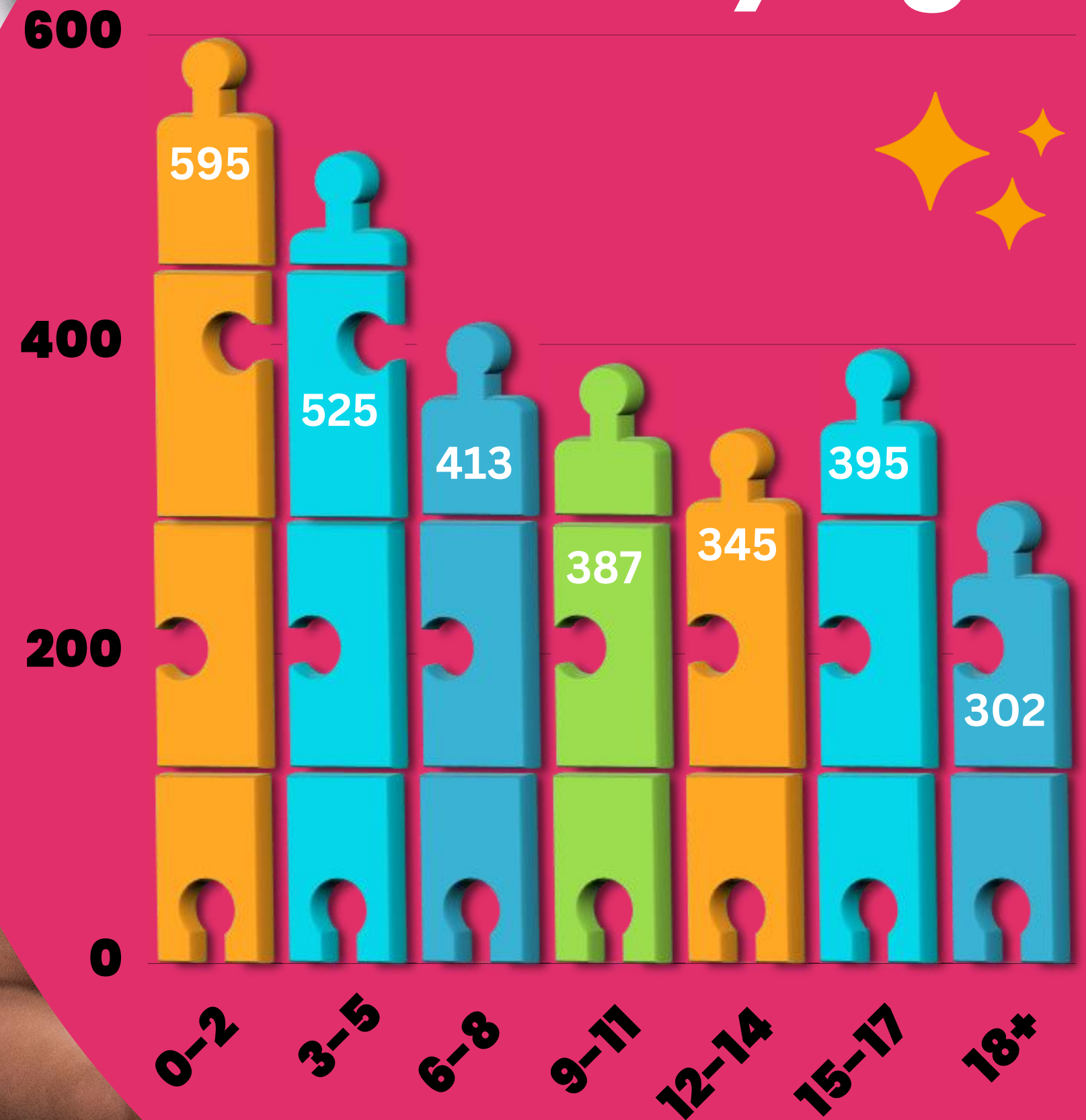
Department of Children and
Family Services

Jennie Feria, Deputy Director, Service Bureau 1
Sabina Sayre, South County Regional Administrator
Edward Fithyan, Torrance Regional Administrator



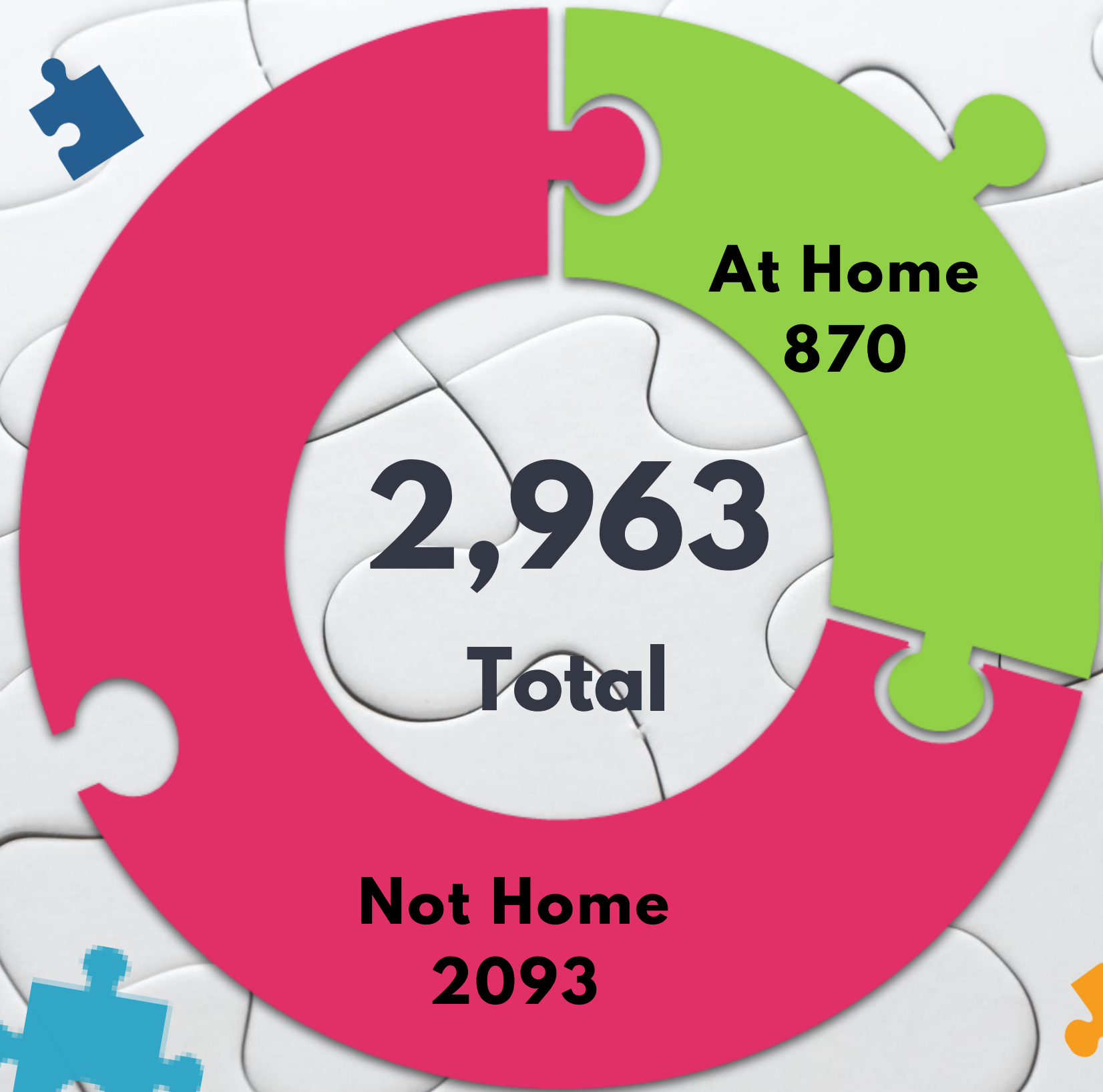


Youth in Care by Age

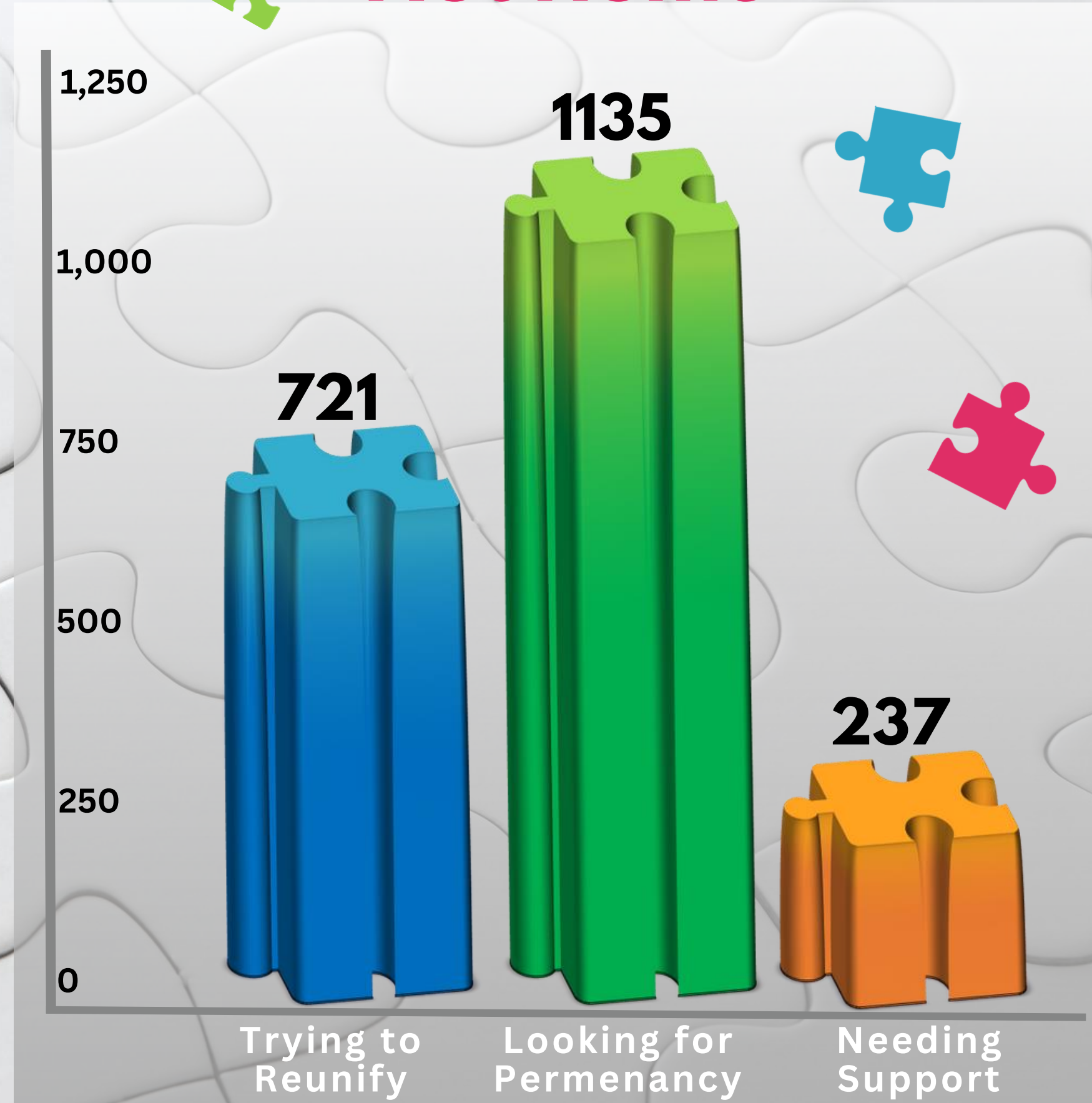


Data Source: SafeMeasures- Open Cases: Time Open (All Cases) by Age as of 10/10/2023

Current Children SPA 8



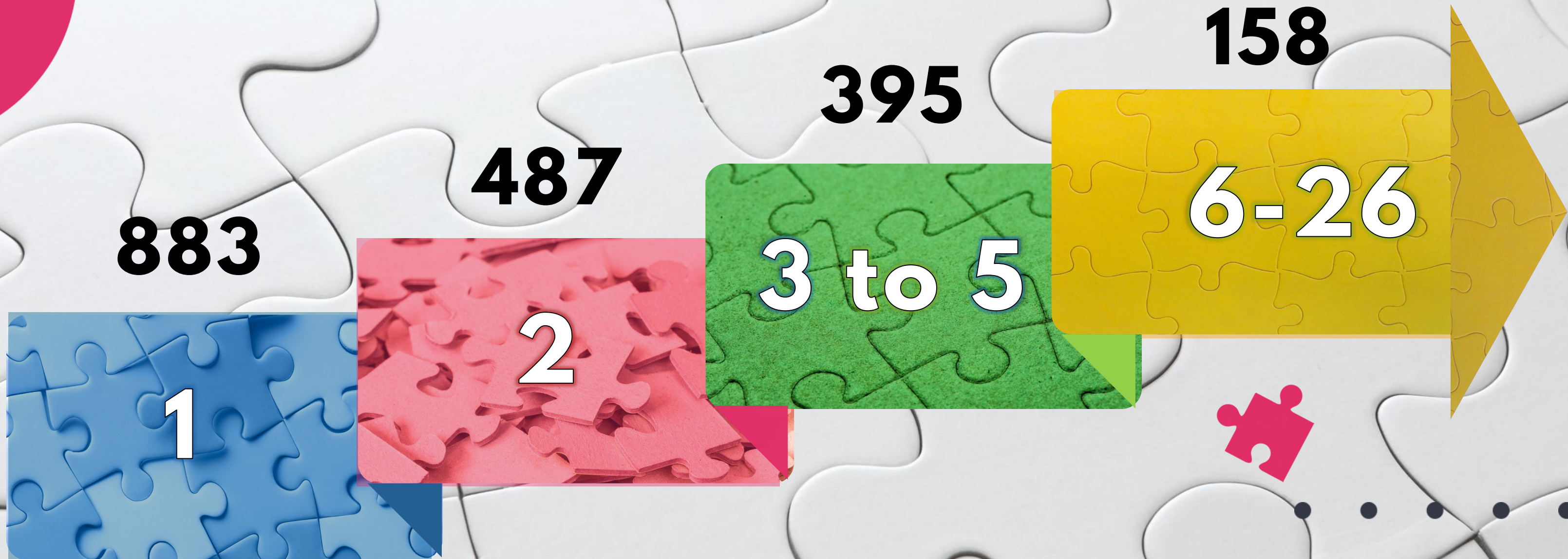
2,093
Not Home



Data Source: SafeMeasures- Open Cases: Time Open (All Cases) and In Placement by Service Component as of 10/10/2023

NUMBER OF PLACEMENTS

1923 Children Not Home



Data Source: SafeMeasures- The Number of Placements Counted within the Episode as of 10/10/2023

*Count excludes youth pending finalization of adoption

SPA 8 Unplanned Placement Moves



1,845 youth had no unplanned placement moves

78 Youth had Unplanned Placement Moves



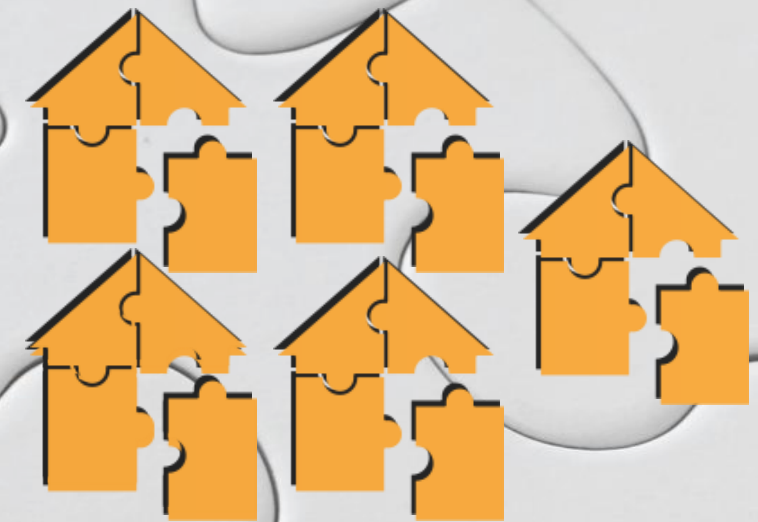
69
1 Move



7
2 Moves



2
3 to 4 Moves



0
5+ Moves



Data Source: SafeMeasures- Behavioral Placement Changes Within Last 24 Months of Episode as of 10/10/2023

***Unplanned placements: Change in placement due to home/agency request, child's behaviors, or higher level of care required within last 24 months**



4% of children have at least one unplanned placement.

Join us to ensure that Every Child in Care has a well Supported, Loving, and Stable Home.

#LoveSpa8



Adopt A Unit Collaboration

**Dr. Iyicko Moore
Faith Liaison
DCFS Torrance**

Adopt A Unit

Department of Children and Family Services (DCFS) Torrance Regional office is establishing an Adopt-A-Unit program. We believe that a strong supportive connection between DCFS and the faith community is crucial to building and strengthening families. The coordination of adopting a unit will occur with both DCFS and the faith community that are already interested in forming a partnership and faith congregations that have no previous connection with DCFS. Adopting a unit is one of many ways to address the compound and complex needs of families under the jurisdiction of DCFS. In forming this partnership with the faith community is a way to create a strong supportive connection with Children Social Workers who are already involved with addressing the needs of vulnerable families. The result of Adopting- A-Unit can be rewarding to the faith community, DCFS and families.



Ideas for adopt a unit activities

- Families:
- Providing tangible goods
- Providing emotional support
- Providing services or connecting families to court ordered services
- Becoming a Cultural Broker
- Supporting the families at the Child and Family Team Meetings (CFTM)
- Assisting families and youth with moving and or transitioning
- Inviting families that ascribe to a faith too church services
- Being a Friend of the Family -Eradicate Social Isolation
-
- Children Social Workers;
- Sending Words of Encouragement to Children Social Workers (CSW)
- Providing Lunch for a Unit
- Holding/Hosting Wellness Activities or Events for the CSW Unit
- Providing Ideas to the Unit that can Strengthen Practice or Engagement with community
- Supporting the CSW with Monitoring visits (once approved)
- Cross Learning- Gaining a Better Understanding of Child Protective Services
- Hosting training at the congregations
- Hosting Unit Meetings at the congregations
-

